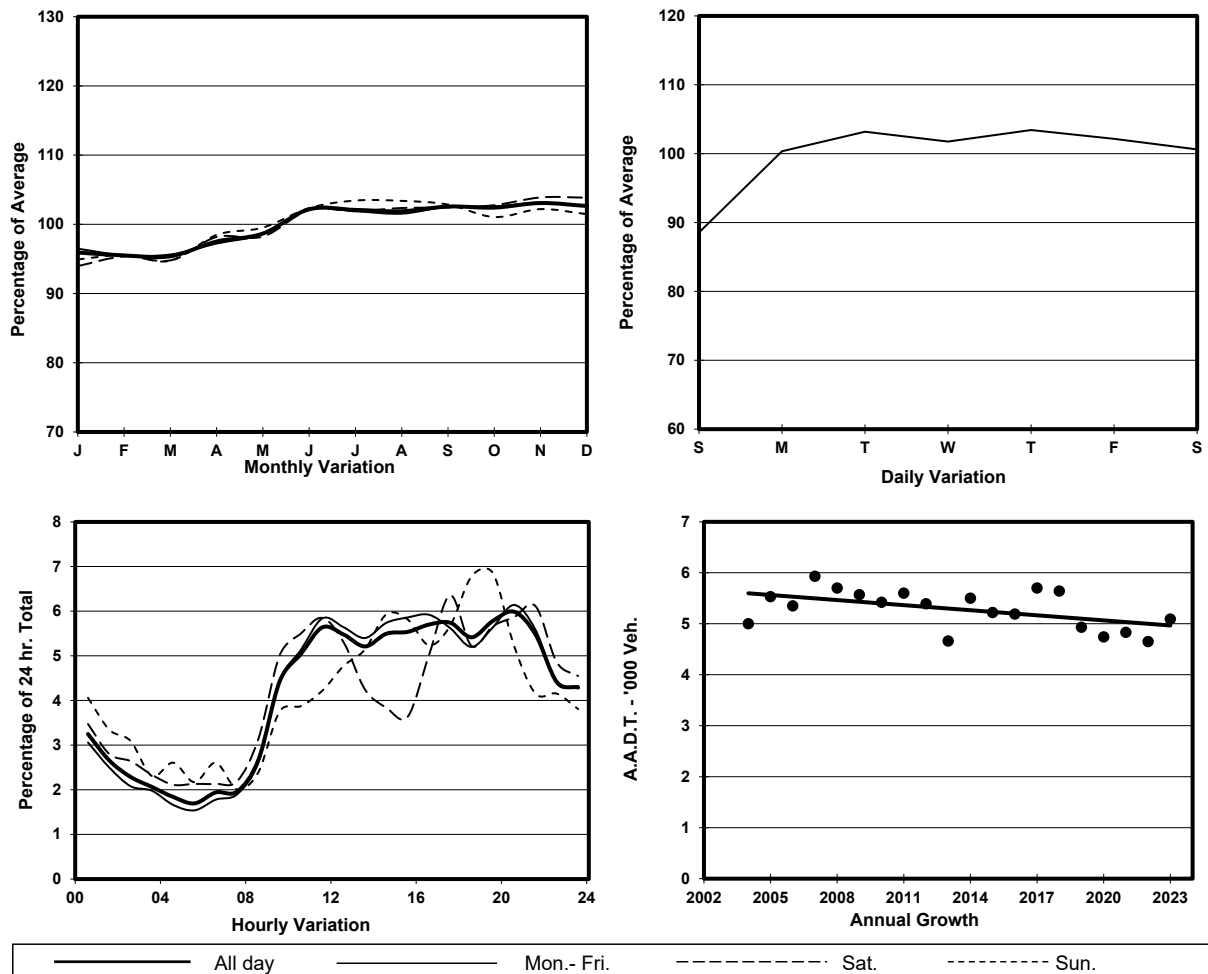


### 1. TRAFFIC FLOW VARIATION AND GROWTH



### 2. TRAFFIC CHARACTERISTICS (BY DIRECTION)

| Parameter                            | All - Day | Mon. - Fri. | Sat.      | Sun.      |
|--------------------------------------|-----------|-------------|-----------|-----------|
| <b>NORTH BOUND</b>                   |           |             |           |           |
| A.A.D.T.                             | 5090      | 5240        | 5170      | 4530      |
| R 12 / 24 - %                        | 58.3      | 59.3        | 55.3      | 55.6      |
| R 16 / 24 - %                        | 80        | 81.1        | 77.8      | 76        |
| AM Peak Hour                         | 0900-1000 | 0900-1000   | 0900-1000 | 0900-1000 |
| One-way flow at AM peak hour         | 230       | 230         | 260       | 170       |
| T - % (AM)                           | -         | 2.6         | -         | -         |
| PM Peak Hour                         | 1700-1800 | 1600-1700   | 1700-1800 | 1800-1900 |
| One-way flow at PM peak hour         | 290       | 310         | 330       | 310       |
| T - % (PM)                           | -         | -           | -         | -         |
| Prop.of commercial vehicles - 16 hr. | -         | 1.2         | -         | -         |
| <br>A.A.D.T.                         | -         | -           | -         | -         |
| R 12 / 24 - %                        | -         | -           | -         | -         |
| R 16 / 24 - %                        | -         | -           | -         | -         |
| AM Peak Hour                         | -         | -           | -         | -         |
| One-way flow at AM peak hour         | -         | -           | -         | -         |
| T - % (AM)                           | -         | -           | -         | -         |
| PM Peak Hour                         | -         | -           | -         | -         |
| One-way flow at PM peak hour         | -         | -           | -         | -         |
| T - % (PM)                           | -         | -           | -         | -         |
| Prop.of commercial vehicles - 16 hr. | -         | -           | -         | -         |

### 3. OTHER INFORMATION AND COMMENT

**4. Vehicle classification and occupancy - Monday to Friday**

| Time                   |     | Class of vehicle |                |      |               |     |            |       |                |         |     |
|------------------------|-----|------------------|----------------|------|---------------|-----|------------|-------|----------------|---------|-----|
|                        |     | Motor<br>Cycle   | Private<br>Car | Taxi | Private<br>LB | PLB | Goods veh. |       | Non<br>Fr. Bus | Fr. Bus |     |
|                        |     |                  |                |      |               |     | Light      | M & H |                | SD      | DD  |
| 0700-0800              | Pro | 11.5             | 26.9           | 30.8 | 0.0           | 0.0 | 26.9       | 3.8   | 0.0            | 0.0     | 0.0 |
|                        | Ocp | 1.0              | 1.1            | 1.5  | 0.0           | 0.0 | 1.0        | 2.0   | 0.0            | 0.0     | 0.0 |
| 0800-0900              | Pro | 6.5              | 29.0           | 41.9 | 0.0           | 0.0 | 22.6       | 0.0   | 0.0            | 0.0     | 0.0 |
|                        | Ocp | 1.0              | 1.3            | 1.5  | 0.0           | 0.0 | 1.1        | 0.0   | 0.0            | 0.0     | 0.0 |
| 0900-1000              | Pro | 5.3              | 28.9           | 26.3 | 0.0           | 0.0 | 36.8       | 2.6   | 0.0            | 0.0     | 0.0 |
|                        | Ocp | 1.0              | 1.5            | 1.3  | 0.0           | 0.0 | 1.2        | 1.0   | 0.0            | 0.0     | 0.0 |
| 1000-1100              | Pro | 5.4              | 28.6           | 41.1 | 0.0           | 0.0 | 25.0       | 0.0   | 0.0            | 0.0     | 0.0 |
|                        | Ocp | 1.0              | 1.2            | 1.4  | 0.0           | 0.0 | 1.3        | 0.0   | 0.0            | 0.0     | 0.0 |
| 1100-1200              | Pro | 5.8              | 39.1           | 37.7 | 0.0           | 0.0 | 14.5       | 2.9   | 0.0            | 0.0     | 0.0 |
|                        | Ocp | 1.0              | 1.2            | 1.4  | 0.0           | 0.0 | 1.3        | 1.5   | 0.0            | 0.0     | 0.0 |
| 1200-1300              | Pro | 3.7              | 26.8           | 39.0 | 0.0           | 0.0 | 28.0       | 2.4   | 0.0            | 0.0     | 0.0 |
|                        | Ocp | 1.0              | 1.5            | 1.8  | 0.0           | 0.0 | 1.3        | 2.5   | 0.0            | 0.0     | 0.0 |
| 1300-1400              | Pro | 5.9              | 41.2           | 39.2 | 0.0           | 0.0 | 13.7       | 0.0   | 0.0            | 0.0     | 0.0 |
|                        | Ocp | 1.0              | 1.5            | 1.8  | 0.0           | 0.0 | 1.1        | 0.0   | 0.0            | 0.0     | 0.0 |
| 1400-1500              | Pro | 0.0              | 34.9           | 41.9 | 0.0           | 0.0 | 23.3       | 0.0   | 0.0            | 0.0     | 0.0 |
|                        | Ocp | 0.0              | 1.3            | 1.9  | 0.0           | 0.0 | 1.3        | 0.0   | 0.0            | 0.0     | 0.0 |
| 1500-1600              | Pro | 4.6              | 30.8           | 44.6 | 0.0           | 0.0 | 15.4       | 4.6   | 0.0            | 0.0     | 0.0 |
|                        | Ocp | 1.0              | 1.3            | 1.8  | 0.0           | 0.0 | 1.3        | 1.7   | 0.0            | 0.0     | 0.0 |
| 1600-1700              | Pro | 4.3              | 32.6           | 43.5 | 0.0           | 0.0 | 19.6       | 0.0   | 0.0            | 0.0     | 0.0 |
|                        | Ocp | 1.0              | 1.4            | 2.0  | 0.0           | 0.0 | 1.6        | 0.0   | 0.0            | 0.0     | 0.0 |
| 1700-1800              | Pro | 5.5              | 45.5           | 36.4 | 1.8           | 0.0 | 10.9       | 0.0   | 0.0            | 0.0     | 0.0 |
|                        | Ocp | 1.0              | 1.4            | 2.1  | 1.0           | 0.0 | 1.5        | 0.0   | 0.0            | 0.0     | 0.0 |
| 1800-1900              | Pro | 3.8              | 43.4           | 41.5 | 0.0           | 0.0 | 11.3       | 0.0   | 0.0            | 0.0     | 0.0 |
|                        | Ocp | 1.0              | 1.4            | 2.1  | 0.0           | 0.0 | 1.3        | 0.0   | 0.0            | 0.0     | 0.0 |
| 1900-2000              | Pro | 6.3              | 62.5           | 25.0 | 0.0           | 0.0 | 6.3        | 0.0   | 0.0            | 0.0     | 0.0 |
|                        | Ocp | 1.0              | 1.6            | 2.3  | 0.0           | 0.0 | 1.5        | 0.0   | 0.0            | 0.0     | 0.0 |
| 2000-2100<br>Peak hour | Pro | 3.8              | 49.1           | 37.7 | 0.0           | 0.0 | 7.5        | 1.9   | 0.0            | 0.0     | 0.0 |
|                        | Ocp | 1.0              | 1.4            | 2.1  | 0.0           | 0.0 | 1.3        | 1.0   | 0.0            | 0.0     | 0.0 |
| 2100-2200              | Pro | 5.4              | 40.5           | 45.9 | 0.0           | 0.0 | 8.1        | 0.0   | 0.0            | 0.0     | 0.0 |
|                        | Ocp | 1.0              | 1.4            | 1.9  | 0.0           | 0.0 | 1.0        | 0.0   | 0.0            | 0.0     | 0.0 |
| 2200-2300              | Pro | 3.1              | 43.8           | 46.9 | 0.0           | 0.0 | 6.3        | 0.0   | 0.0            | 0.0     | 0.0 |
|                        | Ocp | 1.0              | 1.3            | 1.7  | 0.0           | 0.0 | 1.5        | 0.0   | 0.0            | 0.0     | 0.0 |
| 16 hours               | Pro | 4.9              | 38.2           | 38.6 | 0.1           | 0.0 | 17.0       | 1.2   | 0.0            | 0.0     | 0.0 |
|                        | Ocp | 1.0              | 1.4            | 1.8  | 1.0           | 0.0 | 1.3        | 1.7   | 0.0            | 0.0     | 0.0 |

**Legend: Pro.** Proportion of vehicles in % (Sum may not add up to 100% due to figure rounding)\*

**Ocp.** Average occupancy of vehicles including both driver and passengers\*

**M&H** Medium and Heavy

\* All traffic data are collected from combined bounds